

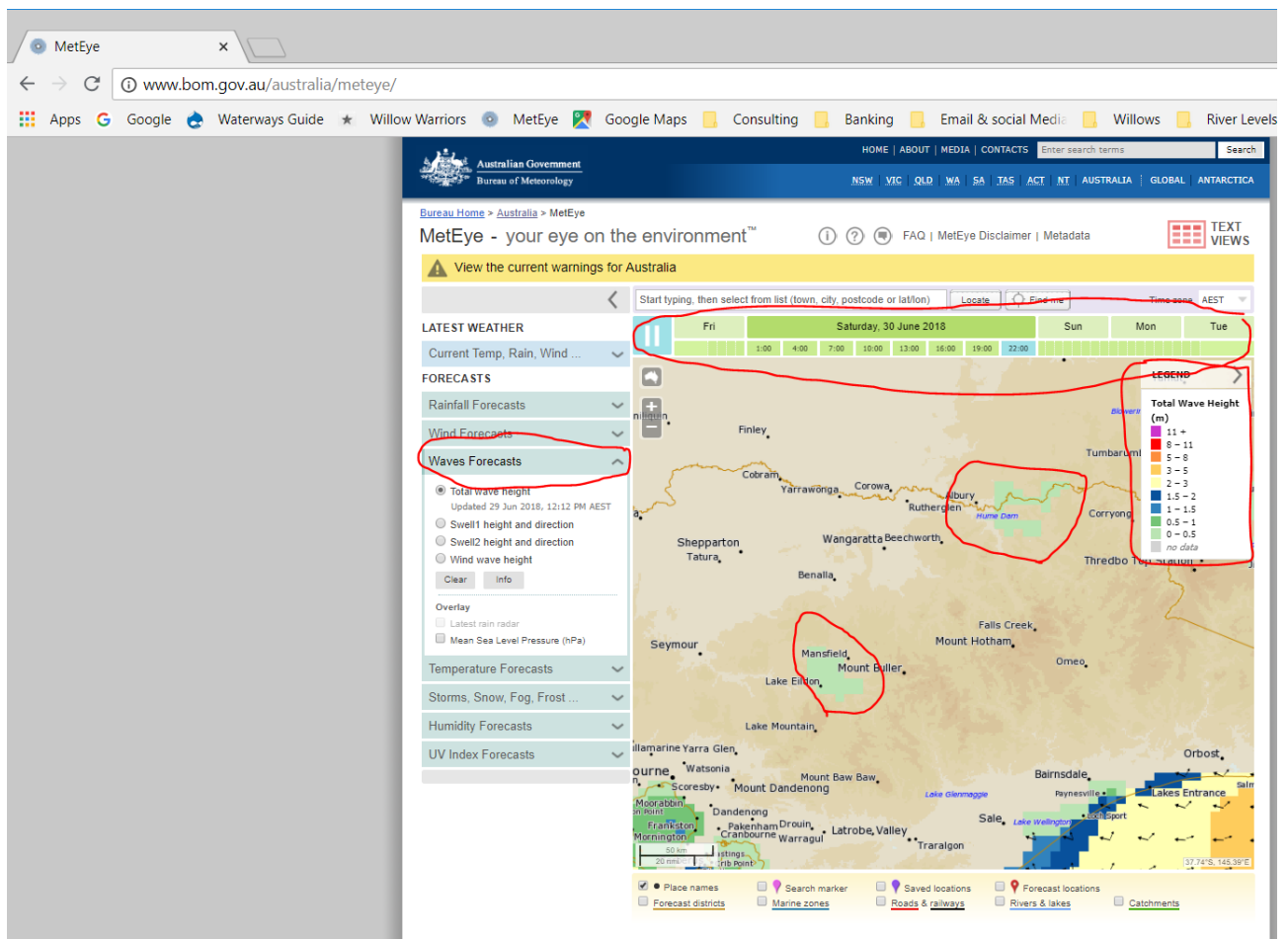
Wind Wave Height now included on BOM Meteye Maps

Wind Wave Height now included on BOM Meteye Maps

As of 29 June 2018 the BOM is including a forecast of Wind Wave Height on a number of inland lakes (see the list below). The wave height will not be shown in the data for the location or the text view it will just be shown as a coloured area at the lake location on the map. They will not be shown on the Marine web pages for Wave height the just Meteye pages

To see the wind wave forecast:

- If you are in the waterways guide www.waterwaysguide.org.au and looking at a trip on one of the lakes just click on the Meteye link. Otherwise go to the Meteye web site www.bom.gov.au/australia/meteye/ in your internet browser.
- Click on the “Wave Forecasts” tab on the left-hand side of the window (circled in red on the map below)
- The map will change to show the shading of ocean, coastal and inland waters wave heights in colours to represent wave height. I have circled in red Lake Eildon and Hume Dam on the map below. Note the inland wave height forecast does not show wave direction so you will need to get that from the wind forecast map.
- The legend is in the top righthand corner (circled in red on the map below)
- The forecast is done in three-hour intervals for three days in the future. You can either click on a day and time along the bar at the top of the map (circled in red) or press the blue play button and the map will scroll through the forecast intervals



Wind Wave Height now included on BOM Meteye Maps

Australian Capital Territory

Lake Burley Griffin

New South Wales

Lake Jindabyne
Lake Eucumbene
Lake George
Lake Illawarra
St Georges Basin
Brisbane Water
Grahamstown Lake
Myall Lake
Queens Lake
Lake Hiawatha
Wooloweyah Lagoon

Queensland

Advancetown Lake
The Broadwater
Lake Wivenhoe
Lake Somerset
Lake Cressbrook
Lake Perseverance
Lake Samsonvale
Lake Baroon
Lake Cootharaba
Tin Can Bay
Lake Monduran
Lake Awoonga
Lake Maraboon
Lake Koombooloomba
Lake Tinaroo
Lake Mitchell

Tasmania

Lake St Clair
Lake King William
Lake Echo
Lake Mackintosh
Lake Burbury
Moulting Lagoon

Victoria

Lake Corangamite
Lake Eildon
Lake Hume

Western Australia

Lake Argyle
Lake Gregory
Wellington Dam
Broke Inlet
Oyster Harbour
Culham Inlet
Pink Lake
Lake Warden